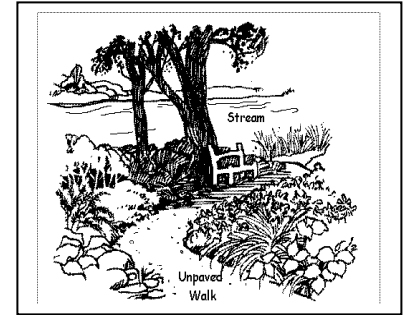


Campaign to Protect and Restore the Taunton River Watershed

Life on the Edge – of a Waterway



dsf.chesco.org/

Lawns/
Gardens

Maintaining stream buffers and tree canopies

WHY?

Car Care

A key component for improving water quality is the protection of environmentally sensitive areas of vegetation that exist near streams, lakes and ponds, and wetland areas. These buffer areas help protect water quality in local streams and the mainstem of the Taunton.

Pet Waste

Vegetated buffers and tree canopies along stream banks shade waterways thus keeping temperatures down and dissolved oxygen up, provide detritus in the stream that serves as food and shelter for aquatic species, and stabilize stream banks, stream channels and floodplains from the erosion and scour of high velocity flood flows. These buffers also serve as the link between terrestrial wildlife and their source of water, food and cover. The roots absorb and "take up" nutrients and other pollutants from ground water as it migrates through the root zone. Plant stems and leaves filter pollutants and sediment from overland flow of storm water while passing through the buffer.

Clean
Dishes/
Clean
Streams

Rooftop
Runoff

Buffers prevent lawn chemicals from entering the waterway. Fertilizers washing into aquatic systems can cause algae blooms, which can ruin swimming and boating opportunities, create foul taste and odor in drinking water, and kill fish by removing oxygen from the water. Buffers also prevent sedimentation from erosion. Too much sediment can cloud the water, reducing the amount of sunlight that reaches aquatic plants, and raising water temperature thus reducing oxygen. Sediment can also clog the gills of fish or smother fish larvae.

Household
Hazardous
Waste

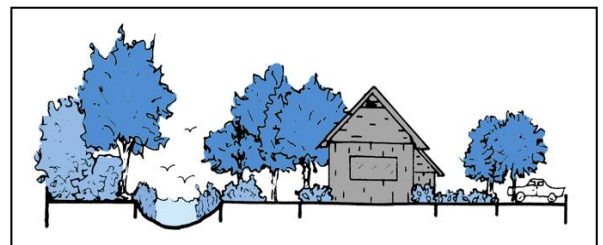
It is very important to protect and restore stream buffers and tree canopies to help preserve these environmentally sensitive areas. If you are lucky enough to have a waterway or wetland on your property, you have a unique opportunity to help improve water quality in your neighborhood and the Taunton River. Here's how to create, protect and maintain buffer areas.

Pervious
Surfaces

HOW?

Stream
Buffers

- ◆ Don't mow down to your stream. Leave at least 10 feet in native plant buffer to filter pollutants.
- ◆ If you fertilize your lawn, stop application at least 20 feet from water's edge to minimize runoff.
- ◆ Reduce surface water runoff and erosion by using permeable paving surfaces, directing runoff to planted areas and increasing groundwater recharge.



more →

- ◆ If your stream bank has begun to erode, seek expert help to repair it.
- ◆ Compost yard waste such as grass clippings, sticks, leaves, and brush; do not dump on the river's edge or into the water, as it can add nutrients that result in excessive aquatic plant growth just like fertilizer does.

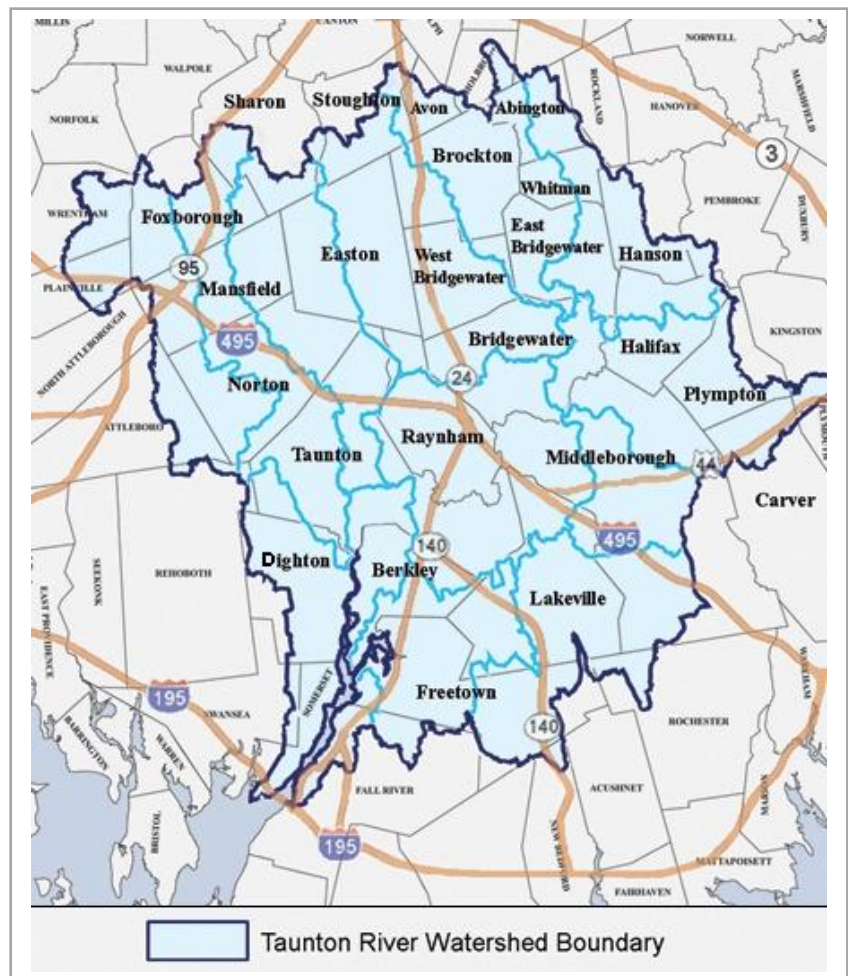
RESOURCES

http://www.uri.edu/ce/healthylandscapes/URI_HomeLandImprovement.pdf

BENEFITS

You help keep the watershed healthy, protecting fish and wildlife habitats. You also make your neighborhood more enjoyable.

If you live within the shaded area on the map, then you live in the Taunton River watershed.



The Taunton River Watershed Alliance is a non-profit alliance of concerned individuals, businesses and organizations who are dedicated to protecting and restoring the Taunton River watershed, its tributaries, wetlands, floodplains, river corridors and wildlife. For more information contact TRWA advocate Priscilla Chapman at 508-828-1104 or pchapman@massaudubon.org.

This guide was adapted from the Blackstone River Coalition's "Tackling Stormwater" series.

